



# DC Shunt Meter

## Advanced Panel Meter

### For DC Current Measurement.

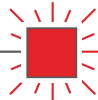
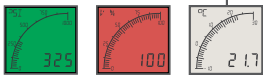
Featuring an acclaimed easy-to-read display and a high resolution input, the Shunt Meter takes the APM into a wide range of new applications, where accurate DC current measurement is required.

The APM Shunt Meter is ideal for DC current measurement applications in marine, leisure, material handling, and industrial applications such as power supplies, load banks and charging systems.

The programmable scale and custom annunciators mean users can tailor the meter to display their critical parameters exactly how they want. Dynamic backlighting, in conjunction with setpoints, means operators are visually alerted when a parameter is out of range. The two outputs can be used to connect the APM to other systems in the process, meaning the APM Shunt Meter is much more than just a display.



Programmable dynamic backlight colour



Warning flash

**0 - 1VDC Input**  
High resolution for DC Current Shunts  
**Low Side Applications**

**0.1%** Accuracy



Programmable 4 digit star-burst display

Custom messages & annunciators



2 alarm set points

**40**

segment curved bar graph display

Combined digital and bar graph display



Programmable scale

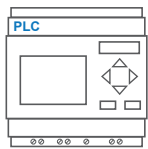


USB port for custom user settings

WIDE viewing angle



Full 4 digit readout for accuracy



2 physical digital and analogue outputs

Less than 53mm deep

**Hoyt Electrical Instrument Works, Inc.**

23 Meter Street  
Penacook, NH 03303

Phone: (800) 258-3652  
Fax: (603) 753-9592  
Email: sales@hoymeter.com

[www.hoymeter.com](http://www.hoymeter.com)



# DC Shunt Meter

## Advanced Panel Meter

### Key Features

Large multi-format display that incorporates:

- 40 segment bar graph display
- Large 4-digit display
- Separate Starburst display area for annunciators, custom messages and alarm information
- Dynamic backlight color

Programmable:

- Display Range (Both Min & Max Values)
- Custom annunciators
- User-selectable backlight color and intensity
- Two independent alarm set-points
- Two independent outputs
- 4-20mA analog monitor output

Visibility:

- User-adjustable backlight brightness and colour
- Large display
- Wide viewing angle (horizontal and vertical)
- Custom annunciators

### Easy To Use Software

Just plug into any USB port on your PC, run the freely available APM Configurator application and you're off. No drivers required.



### Input

Range  
Impedance  
Accuracy

### Voltage

0 - 1 VDC  
1Meg  
0.1% of signal or 0.5mV,  
whichever is greater.

### Environmental

Temperature - operating -10 to +60°C  
Temperature - storage -40 to +70°C  
IP rating (from the front) IP65  
NEMA rating (from the front) Type 4 & Type 12

### Power Supply

Nominal Input 12-24VDC

### Display

Number of digits 4  
Digit height 12mm [0.47"]  
Number of message characters 4  
Backlight colours Red, Green, White  
LCD display Positive or Negative

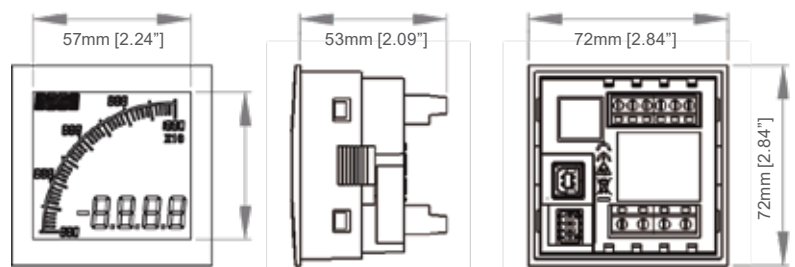
### Outputs

Max voltage 34V  
Max current 500mA  
Analogue output 4-20mA

### Certification

UL, cUL, CE

### Dimensions:



Panel cutout: 68mm x 68mm [2.68" x 2.68"] as per DIN43700/IEC61554



### Part Numbers:

APM-SHUNT-APO APM Shunt Meter, Positive LCD with outputs  
APM-SHUNT-ANO APM Shunt Meter, Negative LCD with outputs  
022128-01 USB Cable

**Hoyt Electrical Instrument Works, Inc.**

23 Meter Street  
Penacook, NH 03303

Phone: (800) 258-3652  
Fax: (603) 753-9592  
Email: sales@hoytmeter.com

[www.hoytmeter.com](http://www.hoytmeter.com)