



HLPI-3E Series

3.5 Digit LCD Panel Meter



3½ Digit LCD with Loop Powered Board

Features

- Low-cost, high-performance replacement for many OEM DPMs.
- Optional RED, GREEN or AMBER backlighting.
- Snap-in bezel mount eliminates mounting hardware.
- Resistant to RF and EMI.
- 3½ digits with high-contrast LCD.
- 4-20 mA loop powered input.
- User-selectable, displayed engineering units.

Ordering Information

SNAP-IN:

Part Number	Backlight Color	Backlight Power
LPI-3*E	NO BACKLIGHT	NONE
LPI-3*EAN	NEG AMBER	24VDC
LPI-3*EGN	NEG GREEN	24VDC
LPI-3*ERN	NEG RED	24VDC
LPI-3*EGP	POS GREEN	24VDC

*Add (P) for Power Engineering Units V, A, KW, PF

ACCESSORIES

PW2-24	Regulated 120V AC to 24V DC Power Supply
CVC	Calibrator

Specifications

Display

Digits: 3 ½ digits (±1999 counts)
Type: 0.45" (11.4 mm) 7 segment LCD

Backlighting: Optional Red Negative (red numbers/black background)
Optional Green Negative (green numbers/black background)
Optional Amber Negative (amber numbers/black background)
Optional Green Positive (black numbers/green background)

Polarity: automatic, "-" displayed
Annunciators: °F, °C, PSI, % user-selectable or V, A, KW, PF
Decimal Points: 3 position, user-selectable
Overrange: fthree lower order digits blank for inputs >1999 & < -1999

Inputs

Ranges: 4-20 mA DC
Configuration: bipolar differential
Impedance: 300Ω nominal

Performance

Accuracy: ±(0.1% fs + 2 count)
Conversion Rate: 3 per second
Normal Mode Rejection: >30 dB @ 60 Hz
Common Mode Range: ±1 VDC max
Common Mode Rej.: >86 dB
Adjustments: span (gain) and zero (offset)
Warmup: 10 minutes typical
Temperature Coeff.: ± 100 ppm per °C typical

Environment

Operating Range: 0 to 50 °C
Storage Range: -10 to 70 °C

Power Supply

powered by the milliamp control loop

Optional Backlight: 24 VDC at 35 mA typical

Mounting

snap-in panel mount

Connection

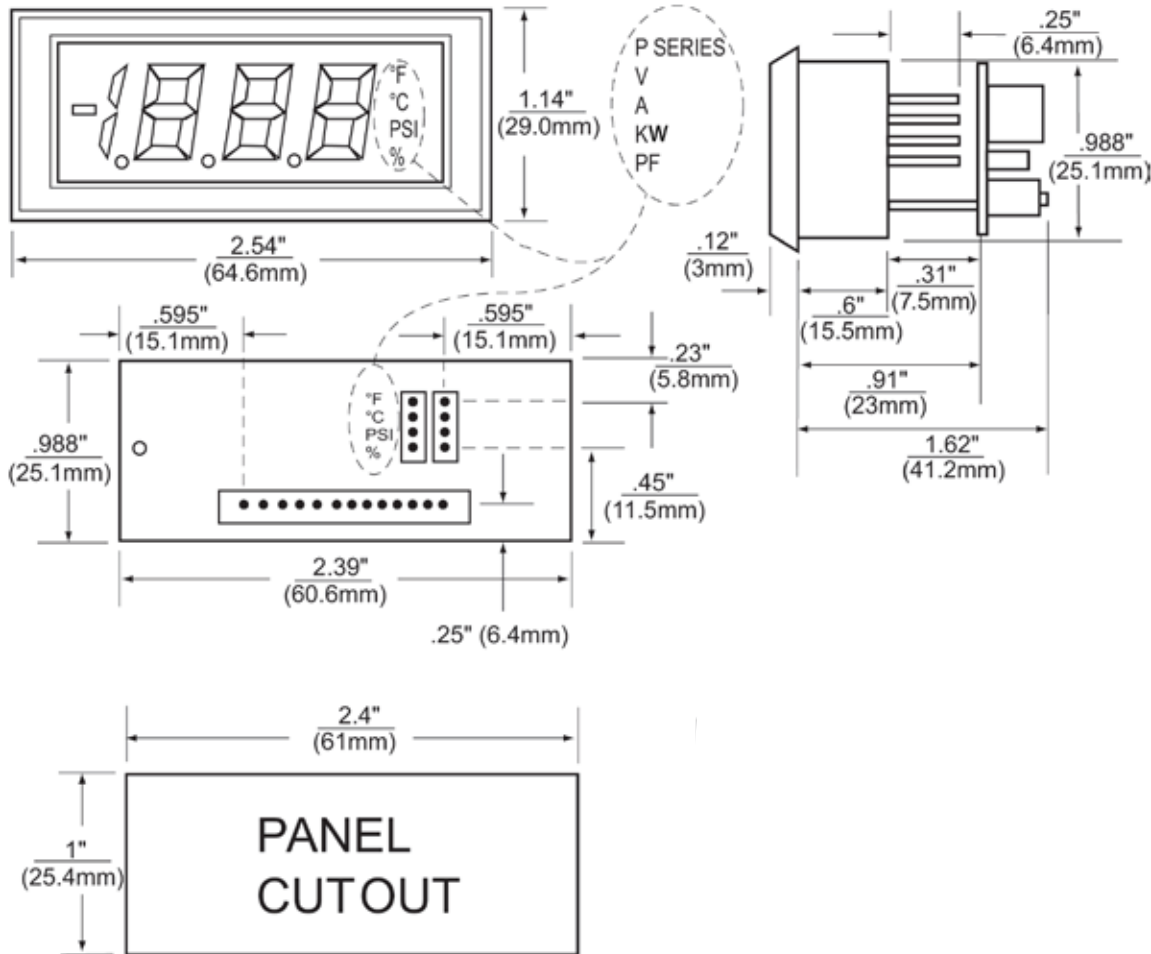
2 screw terminal (4 with backlight)



HLPI-3E Series

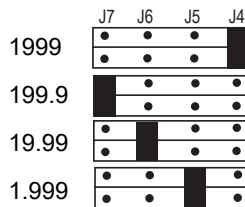
3.5 Digit LCD Panel Meter

Dimensions



Wiring

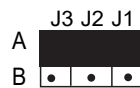
1. Decimal Selection:



2. J1, J2, J3 Selection:

IF: Offset (Zero) = 0 or

Offset (Zero) > 0 and Gain (Span) ÷ Offset (Zero) ≥ 5



IF: Offset (Zero) > 0 and Gain (Span) ÷ Offset (Zero) < 5

