


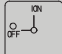





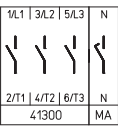
# On-Off Switch 20A-63A

## Disconnect Switches



Front mounting switches with single hole mounting  
 3 up to 4 pole  
 20 A up to 63 A  
 IP66

Switching programme	Rated data (IEC 60947)			Mounting dimension (mm)	M-handle silver/black	M-handle with front ring black/black
	Operat. current $I_n$	Operational power (at 380–440 V)			  IP66	  IP66
		AC-21A (A)	AC-23A (kW)		AC-3 (kW)	Order code number
<b>41300</b> – 3 pole – without auxiliary contacts 	20	5.5	3.7	22.5	H216-41300-219M1	H216-41300-218M1
	20	5.5	3.7	30.5	H216-41300-209M1	H216-41300-208M1
	25	7.5	5.5	22.5	H220-41300-219M1	H220-41300-218M1
	25	7.5	5.5	30.5	H220-41300-209M1	H220-41300-208M1
	32	11	7.5	22.5	H226-41300-219M1	H226-41300-218M1
	32	11	7.5	30.5	H226-41300-209M1	H226-41300-208M1
	40	15	11	22.5	H233-41300-219M1	H233-41300-218M1
	40	15	11	22.5	B240-41300-219M1*	B240-41300-218M1*
	40	15	11	30.5	H233-41300-209M1	H233-41300-208M1
	40	15	11	30.5	B240-41300-209M1*	B240-41300-208M1*
	50	18.5	15	22.5	B250-41300-219M1	B250-41300-218M1
	50	18.5	15	30.5	B250-41300-209M1	B250-41300-208M1
63	22	18.5	22.5	B263-41300-219M1	B263-41300-218M1	
63	22	18.5	30.5	B263-41300-209M1	B263-41300-208M1	

<b>41400</b> – 4 pole – without auxiliary contacts – neutral contact early make/late break 	20	5.5	3.7	22.5	H216-41400-219M1	H216-41400-218M1
	20	5.5	3.7	30.5	H216-41400-209M1	H216-41400-208M1
	25	7.5	5.5	22.5	H220-41400-219M1	H220-41400-218M1
	25	7.5	5.5	30.5	H220-41400-209M1	H220-41400-208M1
	32	11	7.5	22.5	H226-41400-219M1	H226-41400-218M1
	32	11	7.5	30.5	H226-41400-209M1	H226-41400-208M1
	40	15	11	22.5	H233-41400-219M1	H233-41400-218M1
	40	15	11	22.5	B240-41400-219M1*	B240-41400-218M1*
	40	15	11	30.5	H233-41400-209M1	H233-41400-208M1
	40	15	11	30.5	B240-41400-209M1*	B240-41400-208M1*
	50	18.5	15	22.5	B250-41400-219M1	B250-41400-218M1
	50	18.5	15	30.5	B250-41400-209M1	B250-41400-208M1
63	22	18.5	22.5	B263-41400-219M1	B263-41400-218M1	
63	22	18.5	30.5	B263-41400-209M1	B263-41400-208M1	



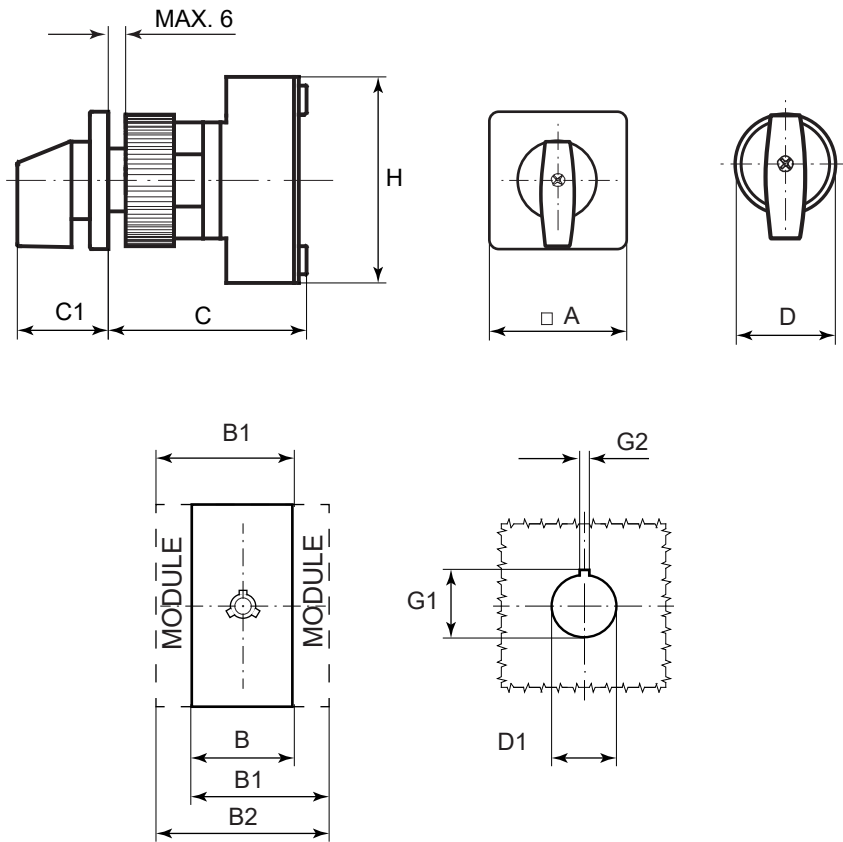
# On-Off Switch 20A-63A

## Disconnect Switches

### Dimensions (mm)

Setup of order code number

Type	Switching progr	Mtg. form
H226	41300	219M1
Order code no.	H226-41300-219M1	



#### Types H216 / H220 / H226 / H233:

Mtg. form	A	B	B1	B2	C	C1	D	D1	G1	G2	H
208M1	-	36	48	60	75	32	39.5	30.5	33	4.8	70
209M1	48	36	48	60	75	32	-	30.5	33	4.8	70
218M1	-	36	48	60	75	31.5	31	22.5	24.2	3.2	70
219M1	48	36	48	60	75	32	-	22.5	24.2	3.2	70

#### Types B240 / B250 / B263:

Mtg. form	A	B	B1	B2	C	C1	D	D1	G1	G2	H
208M1	-	50	69	88	75	32	39.5	30.5	33	4.8	72
209M1	48	50	69	88	75	32	-	30.5	33	4.8	72
218M1	-	50	69	88	75	31.5	31	22.5	24.2	3.2	72
219M1	48	50	69	88	75	32	-	22.5	24.2	3.2	72

Hoyt Electrical Instrument Works, Inc.

[www.hoytmeter.com](http://www.hoytmeter.com)

23 Meter Street  
Penacook, NH 03303

Phone: (800) 258-3652  
Fax: (603) 753-9592  
Email: [sales@hoytmeter.com](mailto:sales@hoytmeter.com)