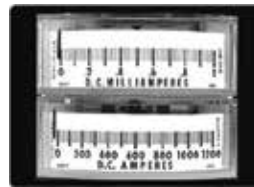


2.5" 685 DC Panel Meters



685-1



685-2



685-3

■ Please specify when ordering as 685-1, 685-2, 685-3

Features

The 685 Series Edgewise Analog Meters have been designed without any barrel projection and is fully shielded to allow vertical or horizontal stacking without interaction between movements or other external magnetic fields. The specially engineered, rugged D'Arsonval movement with high torque-to-weight ratio provides excellent response and damping characteristics.

Can be ordered in single, dual, or triple stack versions.

Supplied bezel and mounting hardware enable quick, trouble-free installation.

Special resistance, accuracy, pointers and ranges available.

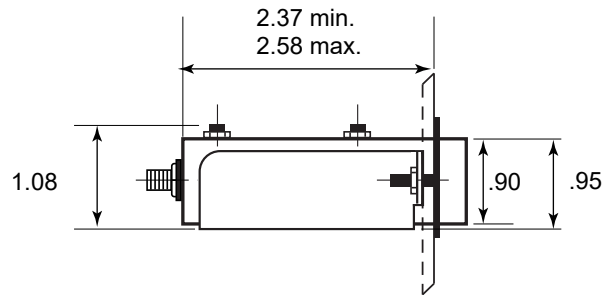
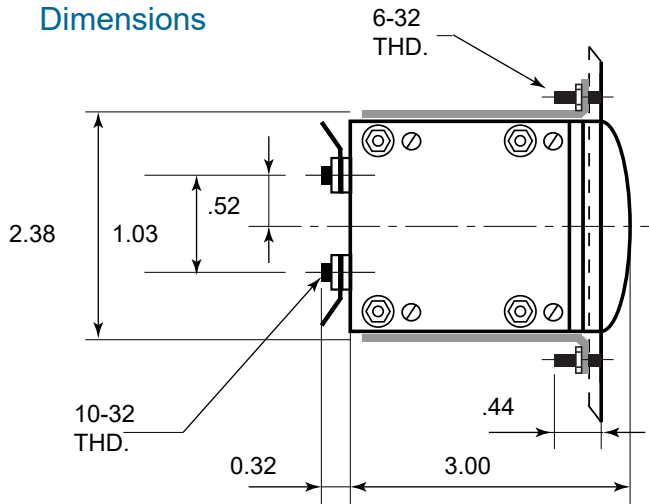
DC Ranges: Microammeters, Milliammeters, Ammeters, Millivoltmeters and Voltmeters.

Specifications

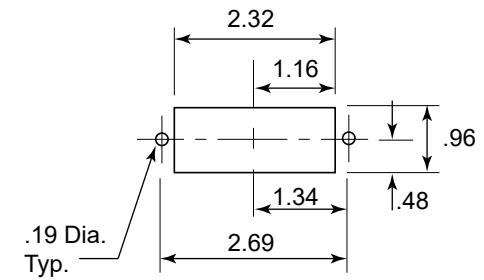
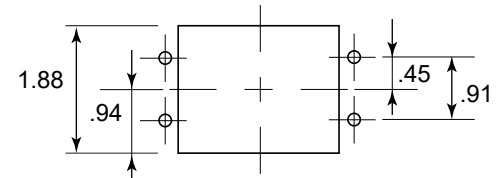
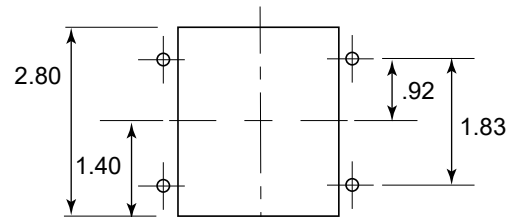
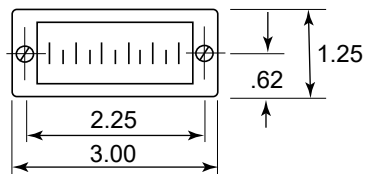
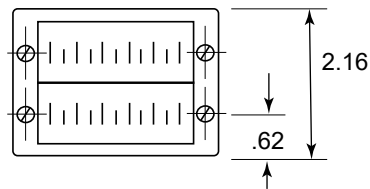
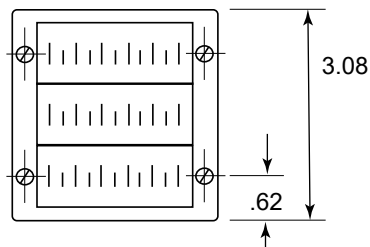
Overload:	Voltmeters: 50% momentary 20% sustained. Ammeters momentary: 10 times the rated current for 10 consecutive intervals of .5 seconds with a 1 minute interval between successive applications; 20% for six hours.
Accuracy:	±2% full scale value.
Resistance:	±15%.
Dials:	Black lettering on white background.
Pointer:	Knife Edge.
Movement:	Pivot and Jewel.
Mounting:	Panel Mount with Bezel (Horizontal/Vertical).
Case:	Lexan.
Operating Temperature:	32°F to 104°F (0°C to 40°C).
Storage Temperature:	-4°F to 131°F (-20°C to 55°C).
Relative Humidity:	20% to 80%RH (Nominal Use).
Meter Approvals:	ANSI C39.1.
Origin:	Made in USA.



Dimensions



Panel Cutout



Bezel Mount Kit

has a cold rolled steel finish in black. for the
 685-1 (Single),
 685-2 (Dual Stack),
 685-3 (Triple Stack)

