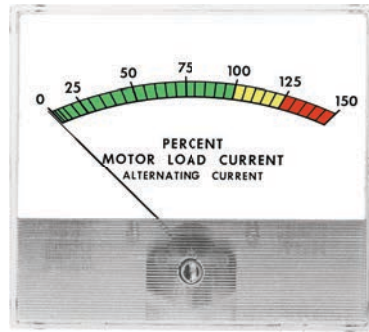




2045/2046 Series Bezel Mount Meters



4-1/2"

2045 ■ D.C. Moving Coil
2046 ■ A.C. Repulsion

FEATURES

- These attractively styled meters are produced in five sizes from 1-1/2" to 6".
- All models have long, flat arc scales and knife edge pointers for excellent readability.
- Most 1-1/2" to 6" meters are supplied with the self shielded Accuring movements.
- The standard AC repulsion movement is also available in 2-1/2" to 6" meter cases.
- Features for the 2000 series include matching AC and DC models, bezel or surface mounting, and choice of standard colors on the lower front cover at additional cost.
- Standard ranges for this series of meters, both AC and DC, are listed on the Hoyt price sheet and include DC Microamps, Milliamps, Millivolts, Volts, and Amps; AC Milliamps, Amps and Volts.
- Special dials are available with the following

SPECIFICATIONS

- | | |
|--------------------|---|
| Accuracy: | ±2% full scale value. |
| Resistance: | ±15% |
| Dials: | 100 or 90 degree arc, black lettering on white background. Special dial colors and artwork are available as an option. |
| Movement: | Spring loaded pivot and jewel movement that assures maximum torque and readability. |
| D.C. Ranges: | Microammeters, Milliammeters, Ammeters, Millivoltmeters and Voltmeters. |
| A.C. Ranges: | Milliammeters, Ammeters, and Voltmeters. |
| Mounting: | Specify (HS) Surface mount, (HB) Bezel mount. |
| Standard Options: | Optional colors available on lower front cover, mirror dials, acrylic. |
| Case Construction: | This series has clear polystyrene cases standard, but acrylic or high impact polycarbonate case are available in some models. |

2000 SERIES BEZELS



Bezel Mount Meters

Bezels for mounting rectangular custom series models 2018, 2025/26, 2035/36, and 2045/46* behind the panel are sturdy, die cast black metal. Bezel mount meters may be ordered with optional quick mount positive locking tabs.

Bezel Part Numbers

C-7052 (overall size 2" x 1-3/16") for 2018

C-7036 (overall size 3-1/8" x 1-23/32") for 2025/26

C-7048 (overall size 3-7/8" x 2-9/32") for 2035/36

C-7030 (overall size 4-31/32" x 2-29/32") for 2045/46*

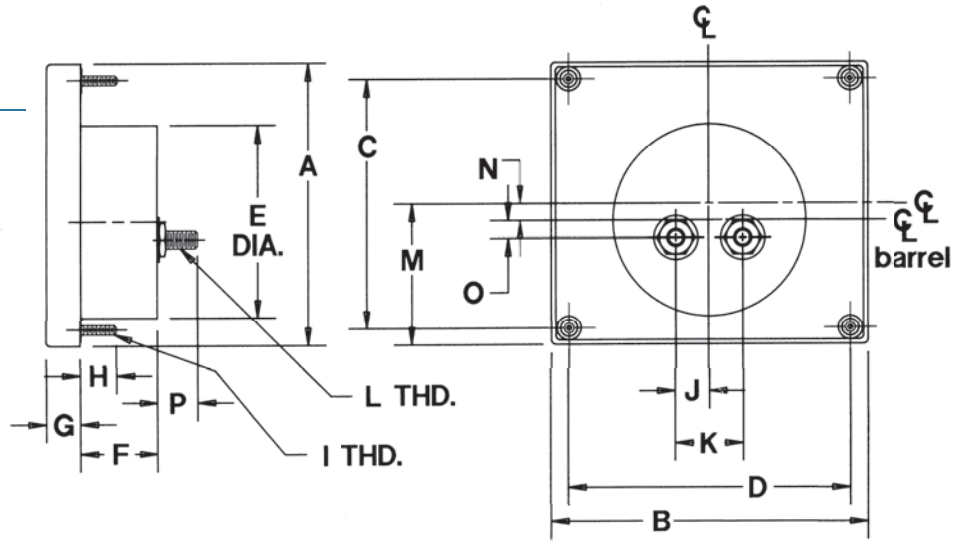
*Polycarbonate



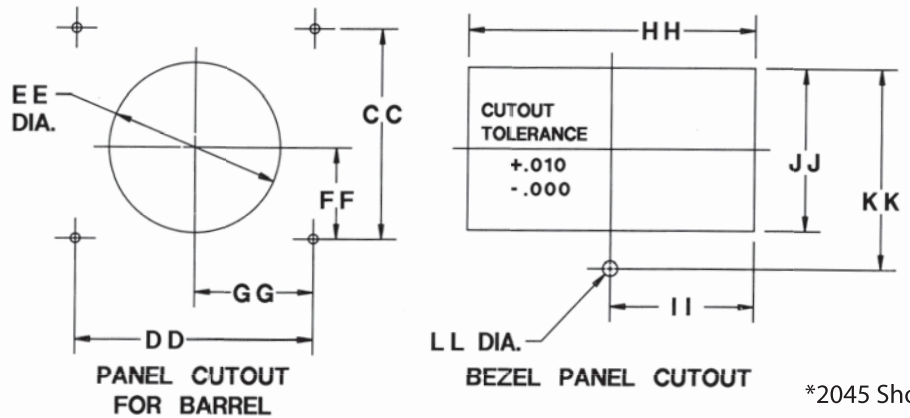
2035/2036 Series

Bezel Mount Meters

DIMENSIONS



MODELS	A	B	C	D	E	F	G	H	I	J	K	L	M	N	O	P
2045/46	4.03	4.50	3.56	4.00	2.75	1.10	0.48	0.62	6-32	0.48	0.97	10-32	2.02	0.24	0.25	0.50



MODELS	CC	DD	EE	FF	GG	HH	II	JJ	KK	LL
2045/46	3.56	4.00	2.88	1.54	2.00	4.82	2.41	2.76	3.40	0.25